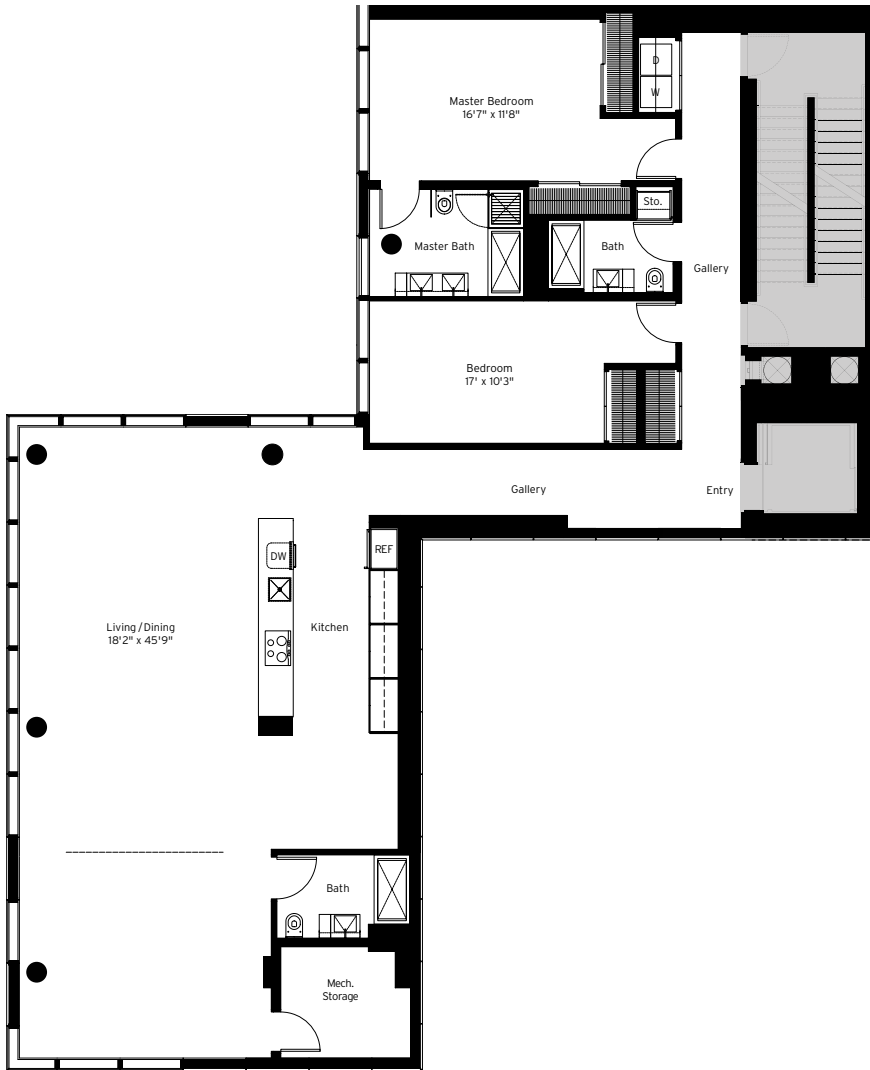


# 10W

2 Bedrooms / 3 Baths  
2,524 square feet

EXCLUSIVE AGENTS  
LEONARD STEINBERG | HERVÉ SENEQUIER  
(212) 727-6162  
LSTEINBERG@ELLIMAN.COM  
WWW.245TENTHAVE.COM/



### 245 TENTH

Unique Glass and CNC  
Stamped Stainless Steel  
Panel Facade  
High Performance Glazing  
Full-Time Doorman

### LOBBY

Polished Cervaiolo White  
Marble Floors  
Walnut Stair with  
Cantilevered Glass Rail  
Acid-Etched Glass Powder-  
Coated Metal Bar Grating

### HIGH LINE TERRACE AND LOUNGE

Views onto the High Line  
Polished Cervaiolo  
Marble Floors  
Ipe Wood Decking

### THE RESIDENCES

Keyed Entry/Elevator Access  
9'8" Ceilings  
Expansive Glass with Oper-  
able Awning-Style Windows  
5" Wide Oak Flooring  
Lualdi Frameless Doors of  
Ebony Oak and Lacquer  
with Stainless Steel Hardware  
Individual Central Air-  
Conditioning Serviced with  
Building-Wide Chilled Water  
Bosch Front-Loading, Energy  
Efficient Washing Machines  
and Bosch Dryers  
Recessed Ceiling Lighting  
and Flush Track Lighting  
for Art Display  
Custom-Designed Base-  
boards and Stainless Steel  
Radiator Covers  
Private Storage Facility  
in Basement

### KITCHENS

RIFRA Fixtures and Cabinetry  
Custom-Designed by  
Della Valle Bernheimer  
Recessed Lighting  
Continuous Stainless Steel  
Countertops with Integral Sink  
Concealed Floor-to-Ceiling  
Pantries  
Concealed Sub-Zero  
Refrigerators  
Thermador 50th Anniversary  
Ovens  
Thermador Cooktops  
Panasonic Microwaves  
Bosch Dishwashers  
InSinkErator Disposals  
Exterior Kitchen Venting

### BATHROOMS

Inca Grey Slab Flooring  
and Tiles in Showers  
Radiant Floor Heating  
Integral Recessed  
Mirror Lighting  
Toto Commode  
Wall-Mounted Faucets  
by Gessi for RIFRA  
Custom Designs by  
Della Valle Bernheimer:  
RIFRA Fixtures and Cabinetry  
Vanity, Corian Tubs, Showers,  
Cantilevered Sinks

The complete offering terms are in an offering plan (as amended), which is available from the Sponsor (file no. CD 06-0294) (the "Plan"). In the event any terms described herein conflict with the Plan, the Plan shall govern. This is not an offer to sell and the contents hereof are not meant to be, and shall not be deemed to be, an inducement to purchase any units in the building. Please consult the Plan for all material terms and conditions.

