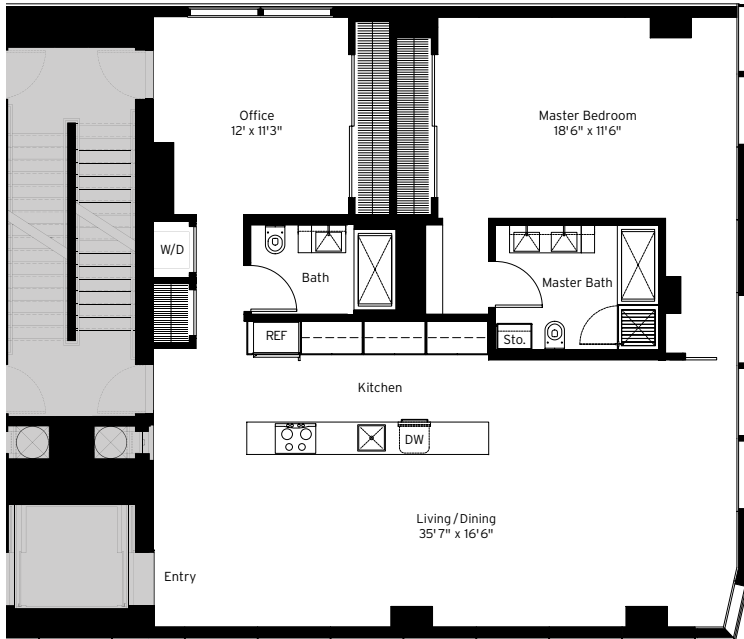


7E

1 Bedroom / 2 Baths / Office
1,503 square feet

EXCLUSIVE AGENTS
LEONARD STEINBERG | HERVÉ SENEQUIER
(212) 727-6162
LSTEINBERG@ELLIMAN.COM
WWW.245TENTHAVE.COM/



245 TENTH

Unique Glass and CNC
Stamped Stainless Steel
Panel Facade
High Performance Glazing
Full-Time Doorman

LOBBY

Polished Cervaiolo White
Marble Floors
Walnut Stair with
Cantilevered Glass Rail
Acid-Etched Glass Powder-
Coated Metal Bar Grating

HIGH LINE TERRACE AND LOUNGE

Views onto the High Line
Polished Cervaiolo
Marble Floors
Ipe Wood Decking

THE RESIDENCES

Keyed Entry/Elevator Access
9'8" Ceilings
Expansive Glass with Oper-
able Awning-Style Windows
5" Wide Oak Flooring
Lualdi Frameless Doors of
Ebonized Oak and Lacquer
with Stainless Steel Hardware
Individual Central Air-
Conditioning Serviced with
Building-Wide Chilled Water
Bosch Front-Loading, Energy
Efficient Washing Machines
and Bosch Dryers
Recessed Ceiling Lighting
and Flush Track Lighting
for Art Display
Custom-Designed Base-
boards and Stainless Steel
Radiator Covers
Private Storage Facility
in Basement

KITCHENS

RIFRA Fixtures and Cabinetry
Custom-Designed by
Della Valle Bernheimer
Recessed Lighting
Continuous Stainless Steel
Countertops with Integral Sink
Concealed Floor-to-Ceiling
Pantries
Concealed Sub-Zero
Refrigerators
Thermador 50th Anniversary
Ovens
Thermador Cooktops
Panasonic Microwaves
Bosch Dishwashers
InSinkErator Disposals
Exterior Kitchen Venting

BATHROOMS

Inca Grey Slab Flooring
and Tiles in Showers
Radiant Floor Heating
Integral Recessed
Mirror Lighting
Toto Commode
Wall-Mounted Faucets
by Gessi for RIFRA
Custom Designs by
Della Valle Bernheimer:
RIFRA Fixtures and Cabinetry
Vanity, Corian Tubs, Showers,
Cantilevered Sinks

The complete offering terms are in an offering plan (as amended), which is available from the Sponsor (file no. CD 06-0294) (the "Plan"). In the event any terms described herein conflict with the Plan, the Plan shall govern. This is not an offer to sell and the contents hereof are not meant to be, and shall not be deemed to be, an inducement to purchase any units in the building. Please consult the Plan for all material terms and conditions.

